

A magnifying glass over Dugan's Apple Blossom Twigs bowls

By: Yvan Beaudry

Today on May 22, 2020, a couple walking by in “Covid-19-ways”, stopped in front of my house and the lady said that my decorative crabapple in full bloom is MAGNIFICENT. Like



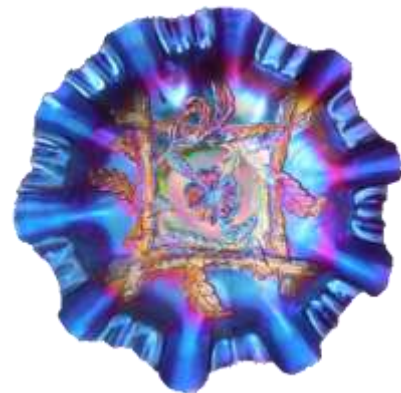
me, she just couldn't believe it. I immediately went to feed him. For a week each spring, this tree makes me smile. As a bonus this year, the background is a blue-Covid sky. WOW. I can't believe how quickly nature repairs itself when man stopped destroying it.

So I love flowers and I love this pattern “Apple Blossom Twigs”. Too bad it hasn't been used on anything other than bowls and plates. As in many cases anyway, the internal patterns are more decorative than useful. *(Editor's note: Dugan*

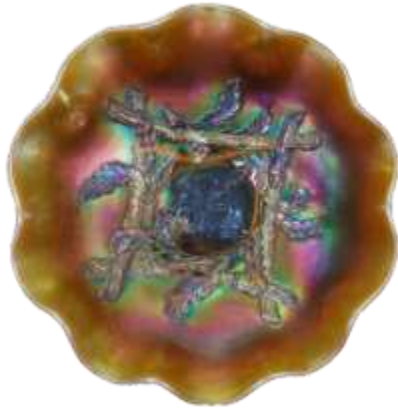
created the mold and produced this pattern in its colors. Diamond continued production in these same colors and added new ones to keep up with fashion. It is also recognized that the quality of the Dugan's iridescence was largely superior and constant (for more details, see the article on Dugan / Diamond in the press gallery of the AVCQ website).

The colors used for this pattern are the usual Dugan shades for the bowls that are given here, in increasing rarity.

- **Purple or amethyst.** The easiest to find and the exceptional cases can currently curl the 4 digits. Think about an electric blue appearance with 3 in 1 edge, like my last favorite find showed in this article. It can be found with the plain back or with the basketweave back-pattern which has no effect on the value. The edges are smooth most of the time and sometimes sawtoothed; again, it does not affect the value. Finally, the shapes are 3 in 1, ruffled, sometimes two side up like an oblong bowl, and finally, the “almost plate” bowl called the flat ruffled bowl.



- **Blue.** The bowls reported all have poor iridescence. If you meet one with a beautiful iridescence, don't let it pass. It would be worth its weight in gold!



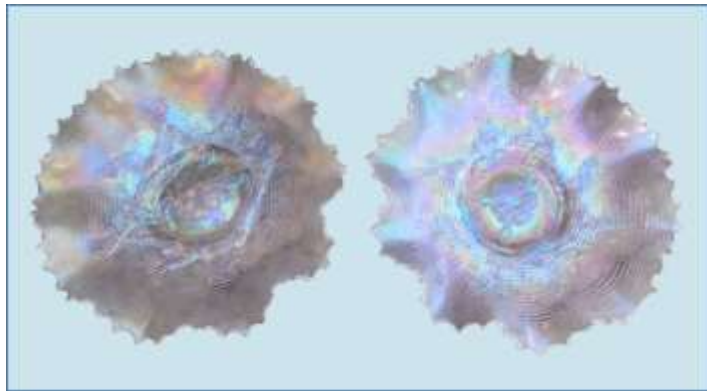
- **Peach opalescent.** Rather easy to find, follows closely, but values play in the \$ 140 currently in 2020 with the Covid-19. The sawtooth rim prevails without effect on the value as well as the back of the bowl. The shape with 2 sides up is to be preferred.

- **Lavender.** Not easy to find, it varies from \$300 to \$600 for a pretty very pale purple pastel. They always have a sawtooth border and a basketweave back-pattern like the white ones.

The color alone dictates the big prices, everything else matters little in this shade.

- **Marigold.** Although we don't see it often, we are talking about cheap! At \$ 30 it's well paid, no matter the shape, the edge or the back. Enough said!

- **White.** Always the sawtooth edges and the basketweave back-pattern... keep your eyes open, you might find me wrong. The 3 in 1 shape is not easy to find, while bowls with a ruffled edge or an upward curved rim (ice cream bowl) are the norm. We usually talk about less than \$ 100 and a better value if there is more blue and pink in the iridescence.



- **Ice blue, green, smoke.** These colors are all super rare (the smoke must be absent from any mauve shades, otherwise it is considered lavender) and count at least for \$500. An ice blue has sold \$ 8,500, but not sure the next one will be that high. Three blues sold very low, surely not perfect. Doty talks about green, but I don't know anything about it, don't miss one if it goes by.

This is it for the bowls. You should never forget that Dugan sometimes exceptionally succeeded in the iridescence and that it might easily inflate values. Today **ALL BLUE IRIDESCENCE** is electrical regardless of the basic color, and electrical iridescence often = \$\$\$.